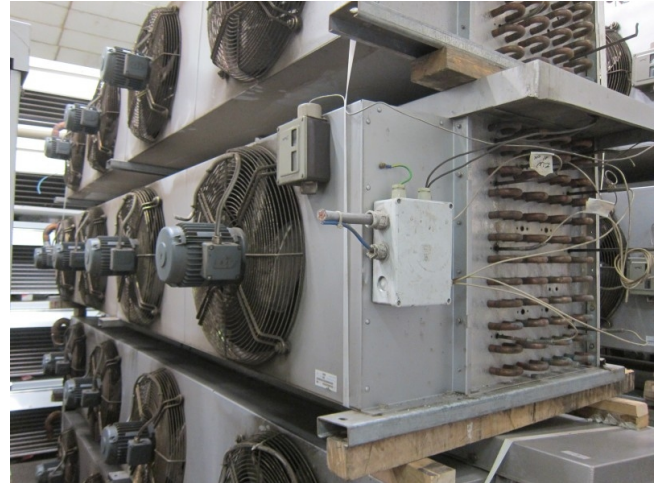


Helpman RL 85 E

Specifications

Brand	Helpman
Type	RL 85 E
kW	66,4
Refrigerant	Freon
Number of Fans	4
Fin Space in mm	9
Defrosting	Electric
m ³ /h	24380
Sizes	4200x1100x700 mm (LxWxH)
Remarks	# // Fan: 0,55 kW / 1410 RPM / Ø = 500 mm
Project	weight 290KG
Stock	3



Description

Used Helpman RL 85 E

66,4KW (cooling) based on -7,5 celcius / 10K// 44,5KW (freezing) based on -30 celcius / 10K Fan: 0,55 kW / 1410 RPM / Ø = 500 mm / 24380 m³/h

